

« Variações sobre a Eterna Inocência »

Flûte, Clarinette, Saxophone, Violon, Alto, Violoncelle, Piano
[2011]

Commande de l'Ensemble Síntese-GMC

Saxophone

Quand la pièce commence le saxophoniste n'est pas sur scène ;
il ne rentrera qu'à la mesure 65, très lentement, en se plaçant
dans sa position, côté jardin, devant, debout.

Pedro AMARAL
(né en 1972)

Piano solo

1 *Assez sombre*, ♩=56 ca.



13

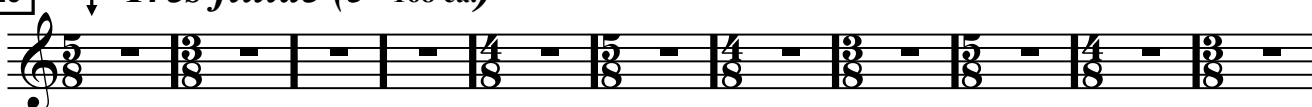


Entrée des autres instruments

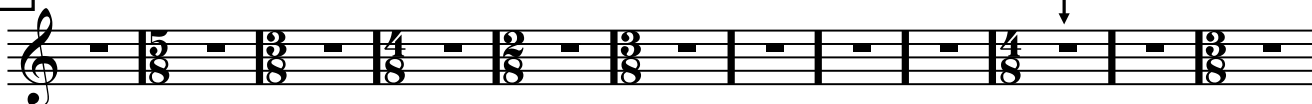
Féerique, léger

Très fluide (♩=168 ca.)

26



37

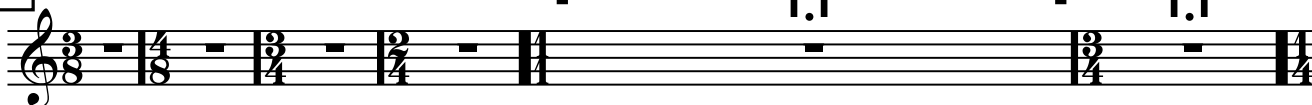


Progressivement plus tendu

49



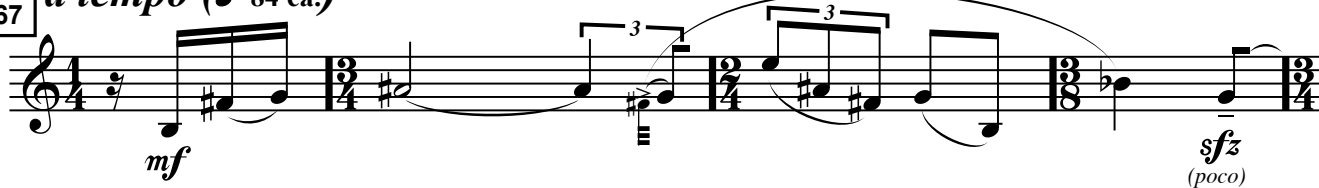
61



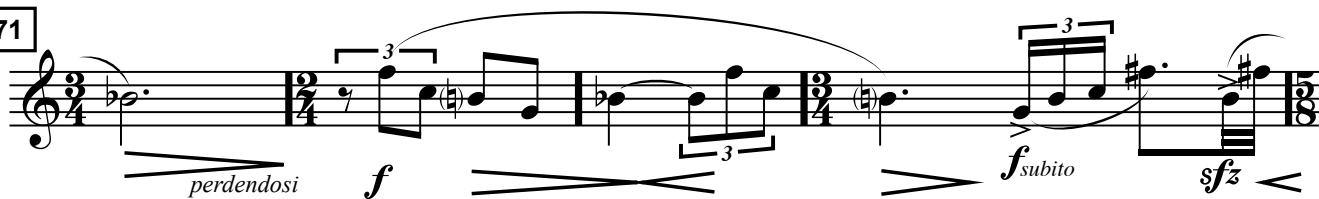
très longue mesure, entre 30" et 50"
(donnez le temps au saxophone solo d'entrer sur scène)

Solo

67 *a tempo* (♩=84 ca.)



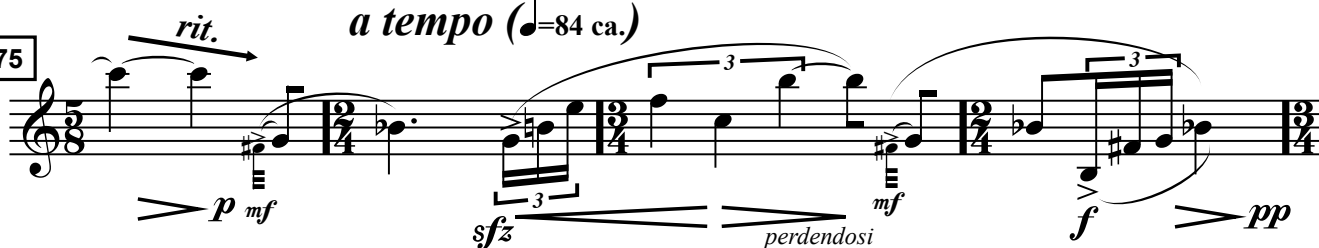
71



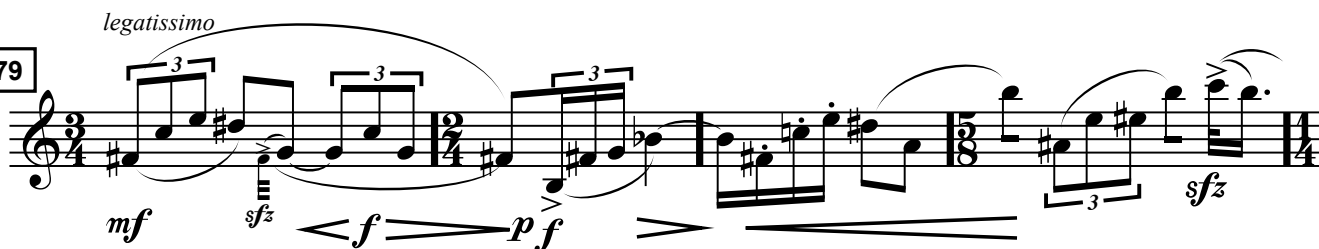
subito:
meno mosso (♩=76 ca.)

a tempo (♩=84 ca.)

75



79

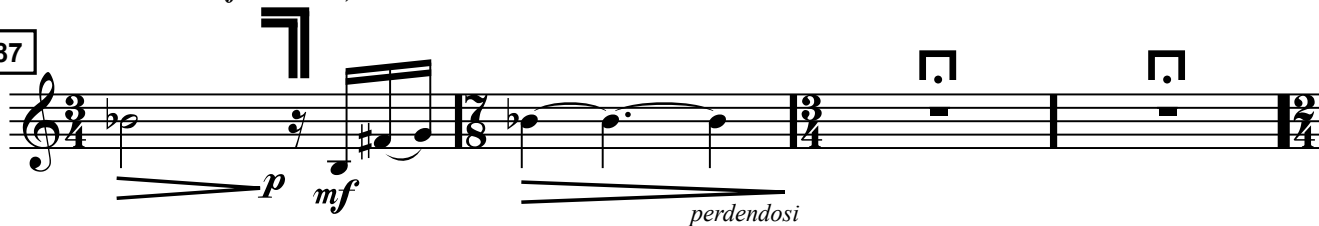


83



(fin du solo)

87



91 [voix secondaire]

Measures 91-95 of the musical score for voice part 2. The key signature has one sharp (F#). The time signature changes from 2/4 to 3/8 in measure 92, then to 3/4 in measure 93, and back to 2/4 in measure 94. The piece begins with a mezzo-forte (mf) dynamic. The notation includes various note values, rests, and triplet markings. The staff is a single treble clef line.

[illegible]

99

mf *f* *perdendosi*

107

ben legato

Musical notation for Exercise 115, featuring treble clef, key signature of one sharp (F#), and time signatures of 3/8 and 2/4. The exercise includes various note values, rests, and fingerings (e.g., 3, 5).

119

[voix secondaire]

pp *mf*

123

p *perdendosi* *legatissimo*

127

sfz

132

f **Solo**

137

perdendosi

142

Piano Solo

150

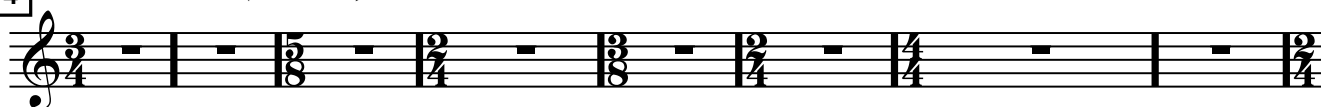
158

 Λ *a tempo* (♩=84 ca.)

166

rit. →

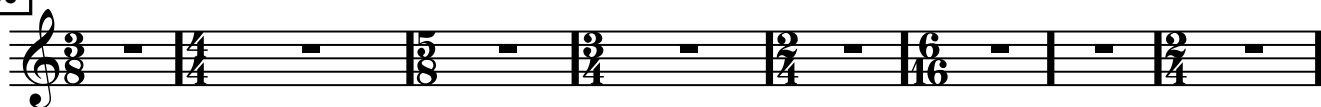
174

Plus lent (♩=72 ca.)

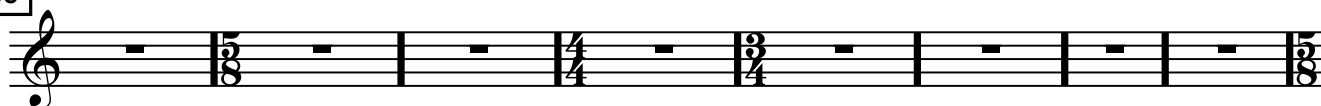
182



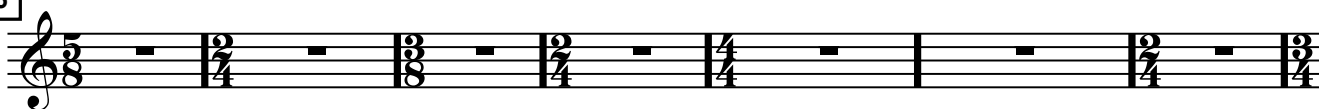
190



198



206



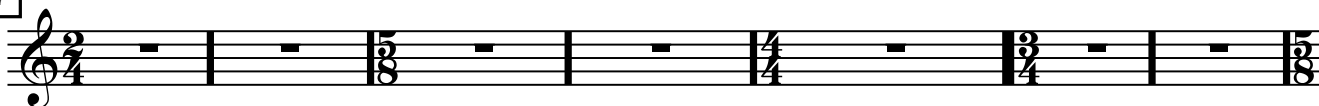
213



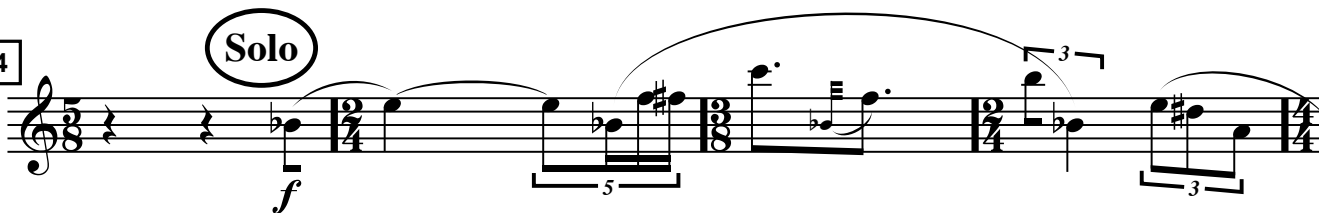
220



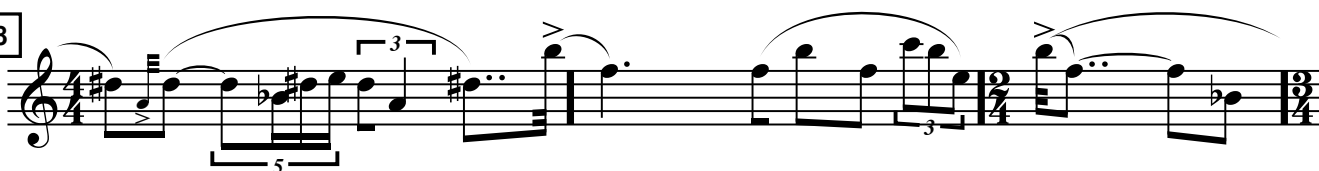
227



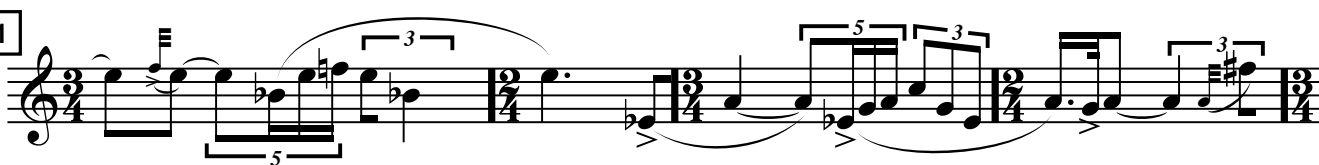
234



238



241



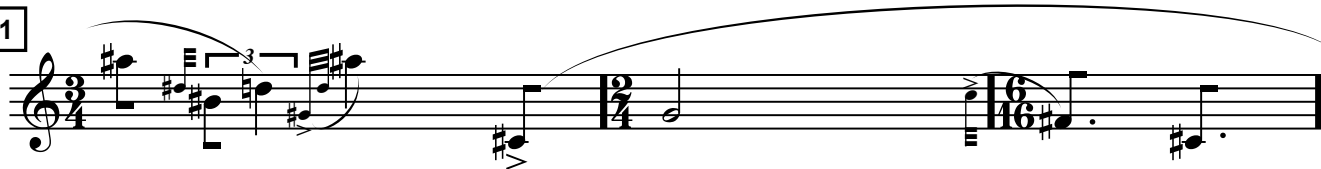
245



249



251



254



257



260



265



269

